



JÄRBO

93239





93239

SOMMARKOFTAN 2026

Sommarkoftan 2026 draws its inspiration from the romantic world of roses. The cardigan is worked in the round top-down and is steeked open at the end. The cuffs are edged with contrasting borders, and the solid-colored sections are worked in a subtle textured pattern that keeps the knitting interesting and brings the garment to life.

YARN Svensk Ull 2 tr (100% Swedish wool, approx. 100 g = 300 m)

YARN ALTERNATIVES

Fin Merino (100% merino, approx. 50 g = 235 m) +
Fin Mohair Silke (72% mohair, 28% silk, approx. 25 g = 210 m)

Alpacka Silke (45% baby alpaca, 40% merino, 15% silk, approx. 50 g = 165 m)

Colin (60% cotton, 40% linen, approx. 50 g = 140 m)

GAUGE Approx. 22 sts x 28 rows stockinette stitch in pattern on needle 3.5 mm = 10 x 10 cm

SIZES XS (S) M (L) XL (2XL) 3XL (4XL)

GARMENT BUST CIRCUMFERENCE Approx. 91 (98) 105.5 (112.5) 121 (129) 136.5 (145.5) cm

GARMENT LENGTH Approx. 40 (40) 40 (40) 41 (42) 43 (44) cm

GARMENT SLEEVE LENGTH Approx. 46 (46) 45 (45) 44 (44) 44 (43) cm

YARN REQUIREMENTS

Color 1: Approx. 270 (290) 300 (330) 350 (380) 410 (440) g (color 74104, Silver Stream)

Color 2: Approx. 30 (30) 30 (30) 30 (40) 40 (40) g (color 74133, Velvet Blue)

Color 3: Approx. 40 (40) 40 (40) 40 (50) 50 (50) g (color 74126, Tea Rose)

CIRCULAR NEEDLE 3 mm and 3.5 mm, 80 cm

DOUBLE-POINTED NEEDLES 3 mm and 3.5 mm (for sleeves. If you prefer magic loop, use a circular needle in the corresponding size)

NOTIONS 7 buttons (15–20 mm), 5–6 markers

DIFFICULTY LEVEL Advanced beginners

DESIGN Maja Karlsson

STITCHES AND TECHNIQUES

See Tips and Shortcuts on the last page for common abbreviations and other useful information.

k2tog: Knit 2 sts together. (1 st decreased)

slip, slip, knit: Slip 1 st knitwise. K1. Pass the slipped st over the knitted st. (1 st decreased)

increase 1 st: Lift the yarn between 2 sts from front to back with the left needle and knit it through the back loop.

Video:

<https://youtu.be/v0K0NHlYyU?si=ZEbyABzuAveaNIgs>

Cardigan length

This cardigan is cropped to the waist. If you want to make a "regular length" cardigan instead, you can lengthen the body before the ribbing by knitting another 10 cm, or to the desired length. If you make

the cardigan 10 cm longer, you will need an extra 70–100 grams of color 1.

Double loop cast-on: Make a loop with the yarn, twist it once more, place it over the right needle, and tighten. Repeat to the desired number of sts.

Video: <https://youtu.be/m-SyTHMSkbbk?si=EwCF-nTwaI7FiGMk>

Short Rows with Wrapped Stitches

When you work short rows, you only knit part of the row and turn at the indicated point. To avoid holes at the turns, the sts are wrapped. When you later pass the wrapped sts, pick them up and knit them together with the original st. **Video:**

<https://youtu.be/wXl4ugwKZBM?si=b4bniVN-HZyniV7q>

NECK EDGING

Note! The neck edging is worked back and forth.



With color 2 and a 3 mm circular needle (80 cm), cast on 101 (103) 105 (107) 109 (111) 113 (115) sts.

Row 1 (WS): p1, *k1, p1* repeat from *-* to end of row.

Row 2 (right side): k1, *p1, k1* repeat from *-* to end of row.

Row 3 (WS): p1, *k1, p1* repeat from *-* to end of row.

Repeat rows 2 and 3 another 3 times. (A total of 9 rows has now been worked.)

YOKE

Change to circular needle 3.5 mm. Work 1 round and at the same time increase 28 (34) 32 (38) 36 (42) 48 (54) sts evenly distributed over the round as described below:

Increase round

XS: k2, [increase 1 st, k3] 6 times, [increase 1 st, k4] 15 times, [increase 1 st, k3] 6 times, increase 1 st, k3
S: k2, [increase 1 st, k3] 33 times, increase 1 st, k2
M: k2, [increase 1 st, k3] 12 times, [increase 1 st, k4] 7 times, [increase 1 st, k3] 12 times, increase 1 st, k3
L: k1, [increase 1 st, k3] 15 times, [increase 1 st, k2] 7 times, [increase 1 st, k3] 15 times, increase 1 st, k2
XL: k2, [increase 1 st, k3] 35 times, increase 1 st, k2
2XL: k1, [increase 1 st, k2] 7 times, [increase 1 st, k3] 27 times, [increase 1 st, k2] 7 times, increase 1 st, k1
3XL: k1, [increase 1 st, k2] 15 times, [increase 1 st, k3] 17 times, [increase 1 st, k2] 15 times, increase 1 st, k1
4XL: k1, [increase 1 st, k2] 23 times, [increase 1 st, k3] 7 times, [increase 1 st, k2] 23 times, increase 1 st, k1

Total stitch count = 129 (137) 137 (145) 145 (153) 161 (169) sts.

Note! At the end of the round, cast on 5 steek stitches. These are not included in the total stitch count.

All sizes: Now join the work to knit in the round, taking care not to twist the stitches. Work stockinette stitch in the round following the chart and chosen size (XS–XL [Rounds 1–53] or 2XL–4XL [Rounds 1–54]).

Note! Each new round begins with the last stitch of the chart before you start to work the full pattern repeat. No increase is worked in this first stitch even

if an increase is indicated in that stitch for the rest of the round.

Then work the chart repeat 16 (17) 17 (18) 18 (19) 20 (21) times per round. Increase according to the chart.

Note! Increases that are placed first and last on the round, directly after or before the steek stitches, can preferably be worked 1 stitch into the chart if possible, depending on the pattern. This gives neater edge stitches along the button band.

When the chart is complete there are 19 sts in each repeat for sizes XS–XL, and 20 sts in each repeat for sizes 2XL–4XL.

Total stitch count = 305 (324) 324 (343) 343 (381) 401 (421) sts.

Work 1 round.

On the next round, work a final increase round where you increase 0 (1) 1 (0) 18 (20) 20 (18) sts evenly distributed as described below:

Increase round

XS and L: No increase

S and M: k162, increase 1 st, k162

XL: k10, [increase 1 st, k19] 17 times, increase 1 st, k10

2XL: k10, [increase 1 st, k19] 19 times, increase 1 st, k10

3XL: k10, [increase 1 st, k20] 19 times, increase 1 st, k11

4XL: k12, [increase 1 st, k23] 6 times, [increase 1 st, k24] 5 times, [increase 1 st, k23] 6 times, increase 1 st, k13

Total stitch count = 305 (325) 325 (343) 361 (401) 421 (439) sts

Place markers

On the next round, place 4 markers at the transitions between front/back pieces and the sleeves. The markers are called VF (= left front), VB (= left back), HB (= right back), and HF (= right front) in the pattern.

Work as follows:

Knit 46 (50) 51 (54) 57 (62) 65 (69) sts (= left front), place marker VF, knit 60 (63) 60 (63) 66 (76) 80 (81) sts (= left sleeve), place marker VB, knit 93 (99) 103 (109) 115 (125) 131 (139) sts (= back), place marker



HB, knit 60 (63) 60 (63) 66 (76) 80 (81) sts (= right sleeve), place marker HF, knit the last 46 (50) 51 (54) 57 (62) 65 (69) sts (= right front).

Back shaping: To ensure a good fit, a few short rows are worked after the patterned yoke.

Note! Markers that are not mentioned are simply slipped to the right needle when you pass them.

Work as follows:

Row 1 (right side): Knit to 4 sts before marker HF (transition right sleeve/front), wrap the next st, turn.

Row 2 (WS): Purl to 4 sts before marker VF (transition left sleeve/front), wrap the next st, turn.

Row 3: Knit to the previous turn, pick up and knit the wrapped st, k5, wrap the next st, turn.

Row 4: Purl to the previous turn, pick up and purl the wrapped st, p5, wrap the next st, turn.

XS-S: Skip the next two rows (rows 5 and 6) and continue with row 7.

M-4XL:

Row 5: Work as row 3.

Row 6: Work as row 4.

Row 7: Knit to the previous turn, pick up and knit the wrapped st, k9, wrap the next st, turn.

Row 8: Purl to the previous turn, pick up and purl the wrapped st, p9, wrap the next st, turn.

Row 9: Knit to the previous turn, pick up and knit the wrapped st, knit to end of row.

The back shaping is now finished.

Continue knitting in the round. **Note!** On the first round, work the last wrapped st (on the left front) as before when you come to it.

The yoke is finished when the center front measures (excluding the neck edging) Approx. 21 (21) 21 (21) 22 (23) 24 (25) cm.

DIVIDE THE WORK FOR SLEEVES AND BODY

On the next round, the yoke is divided into body and sleeves by casting on sts under each sleeve.

Work as follows:

Knit to marker VF and remove it, place the next 60 (63) 60 (63) 66 (76) 80 (81) sleeve sts on a scrap yarn/stitch holder (= left sleeve), remove marker VB, cast on 8 (9) 14 (16) 19 (18) 20 (22) sts using Double loop cast-on, knit to marker HB and remove it, place the next 60 (63) 60 (63) 66 (76) 80 (81) sleeve sts on

a scrap yarn/stitch holder (= right sleeve), remove marker HF, cast on 8 (9) 14 (16) 19 (18) 20 (22) sts using Double loop cast-on, knit to end of round.

BODY

Number of sts on the body: 201 (217) 233 (249) 267 (285) 301 (321) sts. Continue on the circular needle in texture pattern as follows:

Row 1: *k2, p1, k1* repeat from *-* around to 1 st remains, k1.

Rows 2–4: Knit sts.

Repeat rows 1–4 until the body measures Approx. 19 cm from under the sleeve, or until the body is 6 cm shorter than the desired total length.

Note! Finish with row 4 of the texture pattern.

Change to a 3 mm circular needle. Knit 1 row and at the same time decrease 26 (28) 30 (32) 32 (34) 36 (38) sts evenly across the row. **Note!** At the end of the row, bind off the 5 steek sts!

Total number of sts = 175 (189) 203 (217) 235 (251) 265 (283) sts

Ribbing (is worked back and forth)

Row 1 (right side): k1, *1 p1, 1 k1*, repeat *-* to end of row.

Row 2 (wrong side): p1, *k1, p1* repeat *-* to end of row.

Work until the ribbing measures 5 cm. (Finish with a wrong-side row.)

With color 2: Knit 1 row, turn.

Then work 1 more row in ribbing as follows: p1, *k1, p1* repeat *-* to end of row.

Bind off in ribbing.

SLEEVES

Both sleeves are worked in the same way.

Place the sleeve sts from the yarn/stitch holder onto double-pointed needles (or a circular needle if you prefer). With color 1, begin the round at the center of the cast-on sts at the arm hole and pick up 1 st in each cast-on st (the first half of the cast-on sts), knit the next 60 (63) 60 (63) 66 (76) 80 (81) sleeve sts, pick up 1 st in each of the remaining cast-on sts under the sleeve, place a marker here.

Total number of sts = 68 (72) 74 (79) 85 (94) 100 (103) sts.



Work the texture pattern in the round as follows:
XS, S and 3XL - Round 1: *k2, p1, k1* repeat *-* around.

Rounds 2–4: Knit sts.

M and 2XL - Rnd 1: *k2, p1, k1* repeat *-* around until 2 sts remain, k2.

Rnd 2–4: Knit stitches.

L and 4XL - Rnd 1: k1, *k2, p1, k1* repeat *-* around until 2 sts remain, k2.

Rnd 2–4: Knit stitches.

XL - Rnd 1: *k2, p1, k1* repeat *-* around until 1 st remains, k1.

Rnd 2–4: Knit stitches.

Work in the round in the texture pattern until the sleeve measures 5 (5) 4 (4) 2 (0) 0 (0) cm. Next round is a decrease round.

Decrease round: K1, k2tog, knit until 3 sts remain before the marker, slip, slip, knit, k1 = 2 sts have been decreased.

Work the decrease round every 5 (5) 5 (5) 4 (3) 3 (3) cm a total of 6 (7) 7 (7) 9 (12) 12 (12) times = 56 (58) 60 (65) 67 (70) 76 (79) sts.

Note! As the sleeve stitches are decreased, stitches in the texture pattern are omitted and adjusted as you go so the pattern continues as established.

Work even until the sleeve measures Approx. 40 (40) 39 (39) 38 (38) 38 (38) cm. (**Note!** End with round 2 of the texture pattern.)

On the next round decrease another 0 (2) 0 (1) 3 (2) 0 (3) sts evenly spaced over the round = 56 (56) 60 (64) 64 (68) 76 (76) sts.

Work 1 round.

Ribbing edge: Change to needle 3 mm. First work 1 round knit and at the same time decrease 12 (10) 12 (14) 12 (14) 18 (14) sts evenly spaced over the round. Number of stitches = 44 (46) 48 (50) 52 (54) 58 (62) sts.

Work ribbing: *k1, p1* repeat *-* around. Work until the ribbing measures 5 cm.

With color 2: Knit 1 round.

Then work a further 1 round in ribbing.

Bind off in ribbing.

REINFORCEMENT STITCH IN THE STEEK STITCHES

Using a needle and sewing thread, sew by hand in backstitch in the 2nd and 4th steek stitch (the stitches on each side of the center stitch). **Note!** Do not cut open yet; first work the front bands!

Note! If you are using the yarn alternative Colin or another plant-based yarn, you should sew the reinforcement stitch by machine. First sew a zigzag stitch, then a straight stitch on top.

LEFT FRONT BAND

With a 3 mm circular needle and color 1:

Begin at the top at the neck edging (on the right side). Pick up stitches along the front edge as follows:

Pick up 2 sts over 3 rows – i.e., skip every 3rd row.

The last stitch should be at the very edge of the ribbing, and the total number of stitches should be an odd number.

Row 1–10: Knit.

Then bind off in knit from the wrong side.

RIGHT FRONT BAND (WITH BUTTONHOLES)

With a 3 mm circular needle and color 1:

Begin at the very bottom at the ribbing (on the right side). Pick up the same number of stitches, and in the same way, as on the left front band.

Rows 1–4: Knit, back and forth

Row 5 (WS): On this row, work 7 buttonholes. Place the top buttonhole in the center of the neck edging, the bottom one approx. 4 sts in from the lower edge of the ribbing and distribute the remaining buttonholes evenly between these. Knit and bind off for the buttonholes over 2 stitches.

Row 6 (RS): Knit and cast on 2 stitches where you bound off on the previous row, at each buttonhole.

Note! Cast on the new stitches using Double loop cast-on!

Rows 7–10: Knit back and forth; the last row is from the right side.

Row 11: Bind off in knit from the wrong side.



CUT OPEN THE CARDIGAN AND SEW DOWN THE STEEK EDGES

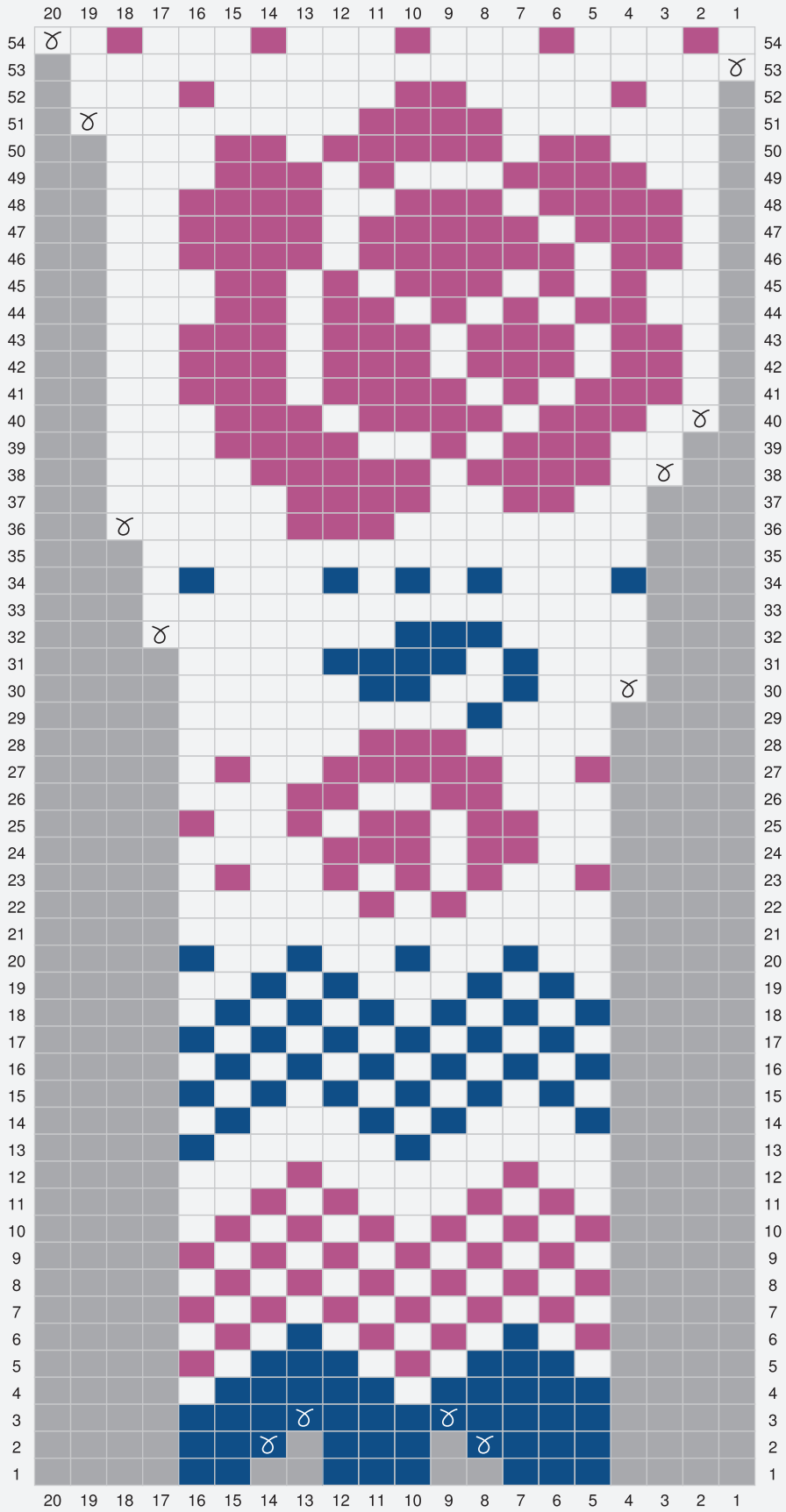
Carefully cut open the cardigan in the center steek stitch. Fold the steek edges formed by the cut stitches at the center front towards the inside of the cardigan and sew them down carefully.

If you like, you can cover the steek edges with a ribbon.

FINISHING

Weave in ends. Sew on the 7 buttons. Block the work by wetting it and letting it dry flat. Pin out to the given measurements.

BLÅBÄRSBLOM



- Color 1
- Color 2
- Color 3
- ⌘ increase 1 st
- No stitch (skip the square in the chart)



TIPS & SHORTCUTS

To avoid questions: Before you begin knitting, read through the pattern.

Stitch count: Always knit or crochet a gauge swatch as recommended in the pattern. If your stitch count doesn't match the gauge given in the pattern, try again with larger or smaller needles or hook. If your gauge doesn't match that in the pattern, your item will not be the correct size or shape.

Highlight the size you will knit or crochet throughout the pattern to make it easier to follow the instructions.

Charts: It will be easier to follow a chart if you mark your row with a ruler and magnetic board or sticky note.

Ease: The amount of ease included in our garments varies depending on the type and shape of the garment. To determine the right size, we recommend that you first measure your body. Then you can calculate the garment size depending on how much ease you want the garment to have. The schematics for each piece show all the garment measurements.

Two-color stranded knitting: When knitting more than 3-4 stitches of the same color, twist the color strands around each other on the wrong side to avoid long strands or "floats" on the back. If the yarns need to be twisted on several rows/rounds, make sure you do not stack the twists in the same place to prevent the yarns from showing through on the right side.

Tips för hand dyed yarn: Make sure you have enough yarn to complete your project. The colors may vary from time to time. To get a smooth color mix, you can alternate between two skeins: knit two rows from one and two rows from another skein.

ABBREVIATIONS

alt = alternately, **approx.** = approximately, **beg** = begin, **bl** = back loop, **BOR** = beginning of row/round, **cc** = contrasting color, **col** = color, **cont** = continue, **dec** = decrease, **EOR** = end of row/round, **fl** = front loop, **inc** = increase, **m** = marker, **mm** = millimeters, **mc** = main color, **patt** = pattern, **pm** = place marker, **rep** = repeat, **rnd(s)** = round/rounds, **RM** = remove marker, **RS** = right side, **sl** = slip, **sl m** = slip marker, **st(s)** = stitches, **tog** = together, **WS** = wrong side, **yo** = yarn over

KNITTING

BO = bind off, **cn** = cable needle, **CO** = cast on, **dpn(s)** = double-pointed needles, **g st** = garter stitch, **k1f&b** = knit in front and back loop of same stitch, **k** = knit (stitch), **k2tog** = knit two stitches together, **kw** = knitwise, **LH** = left hand needle, **p** = purl (stitch), **pw** = purlwise, **RH** = right hand needle, **ssk** = slip, slip, knit, **St st** = stockinette/stocking stitch, **wyib** = with yarn in back, **wyif** = with yarn in front

CROCHETING

ch = chain stitch, **dc** = double crochet, **dtr** = double treble crochet, **hdc** = half double crochet, **htr** = half treble crochet, **sc** = single crochet, **sl st** = slip stitch, **tr** = treble crochet, **tr tr** = triple treble crochet

DIFFICULTY

Beginner: Anyone with no experience knitting/crocheting. Easy techniques and clear explanations.

Adventurous Beginner: For a beginner ready to take the next step. Clear explanations so you can try some new techniques.

Intermediate: Anyone who has knitted/crocheted for a while but who wants a challenge. More advanced techniques and two steps occur at the same time.

Experienced: For experienced knitters/crocheters who have already tried many techniques and methods. Advanced/uncommon techniques and several steps occur simultaneously.